

NH

NOURISON
HOSPITALITY

MARRIOTT
BRAND PROGRAM

SHERATON HOTELS
CLASSIC PREMIUM BRAND



MARRIOTT BRAND PROGRAM

Marriott and Nourison Hospitality have fostered a strong collaborative relationship that goes beyond a traditional partnership. With decades of experience in Axminster carpet manufacturing, we continue to provide custom solutions that meet Marriott's approved brand standards.

For nearly 11 years, Nourison Hospitality's in-house design team has worked closely with Marriott select brands to develop the AC, ALOFT, and SHERATON programs. These programs allow us to provide custom carpets that offer a unique experience to your customers while satisfying brand standards.

To place an order or to learn more about Nourison Hospitality's Marriott approved brand standards, please contact your Nourison Hospitality Sales Representative, or call our Customer Service Department at:

USA:

(800) 223-1110 | (706) 629 1799

hospitality@nourison.com

EUROPE:

(+41) 044 401 45 46/47

Omid.Louie@nourison.com

SHERATON:
TIMELESS COMFORT

CORRIDOR OUTFILL LIGHT



14272V1A-8R-2PLY



CLOSE-UP DETAIL

SPECIFICATIONS

Repeat Size	78.57" x 88.50"
Quality	8 Row
Fiber	80% Premium Wool 20% Nylon
Loom Width	13'2"
ID#	326805



CORRIDOR RUNNER LIGHT



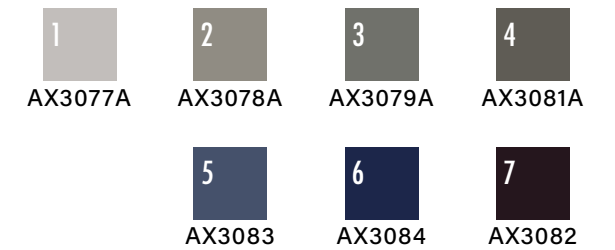
12373V2A-8R-2PLY



CLOSE-UP DETAIL

SPECIFICATIONS

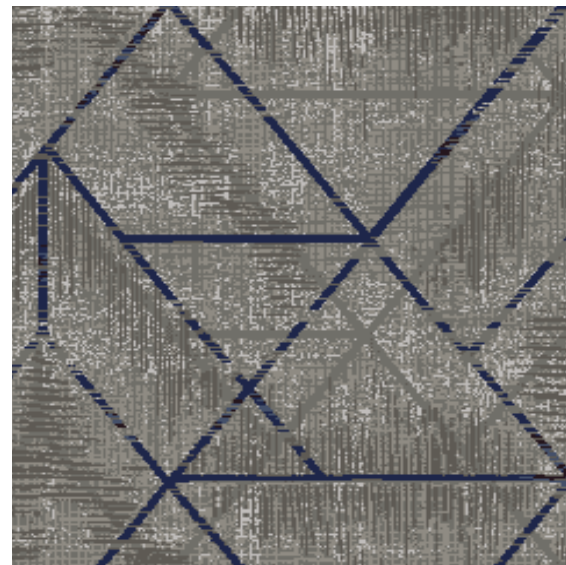
Repeat Size	78.57" x 88.50"
Quality	8 Row
Fiber	80% Premium Wool 20% Nylon
Loom Width	13'2"
ID#	326802



TRANSITION LIGHT



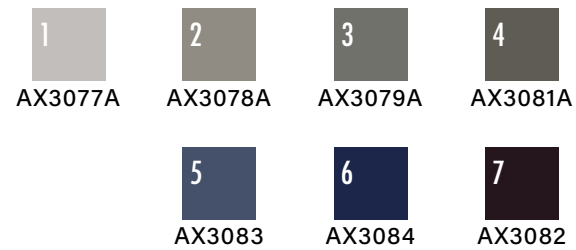
14273V1A-8R-2PLY



CLOSE-UP DETAIL

SPECIFICATIONS

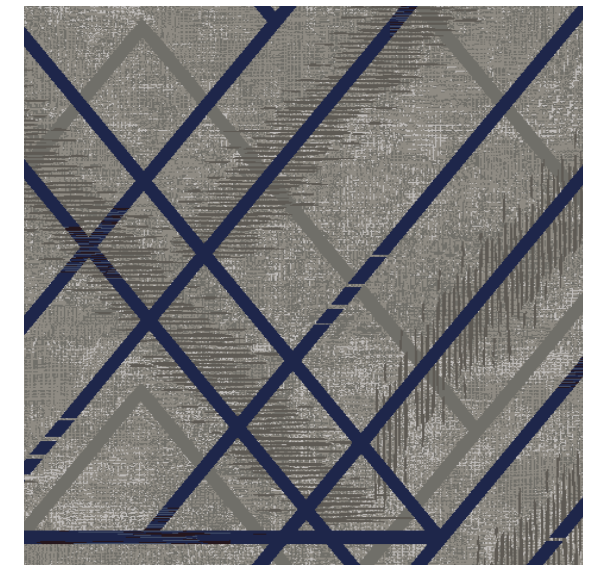
Repeat Size	78.57" x 88.50"
Quality	8 Row
Fiber	80% Premium Wool 20% Nylon
Loom Width	13'2"
ID#	326812



ELEVATOR LOBBY LIGHT



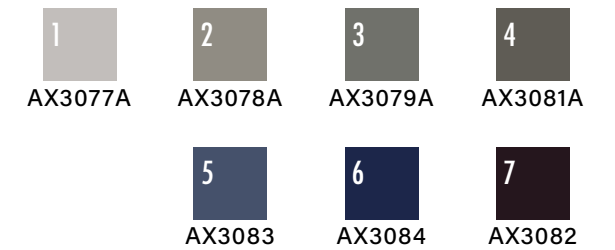
14308V1A-8R-2PLY



CLOSE-UP DETAIL

SPECIFICATIONS

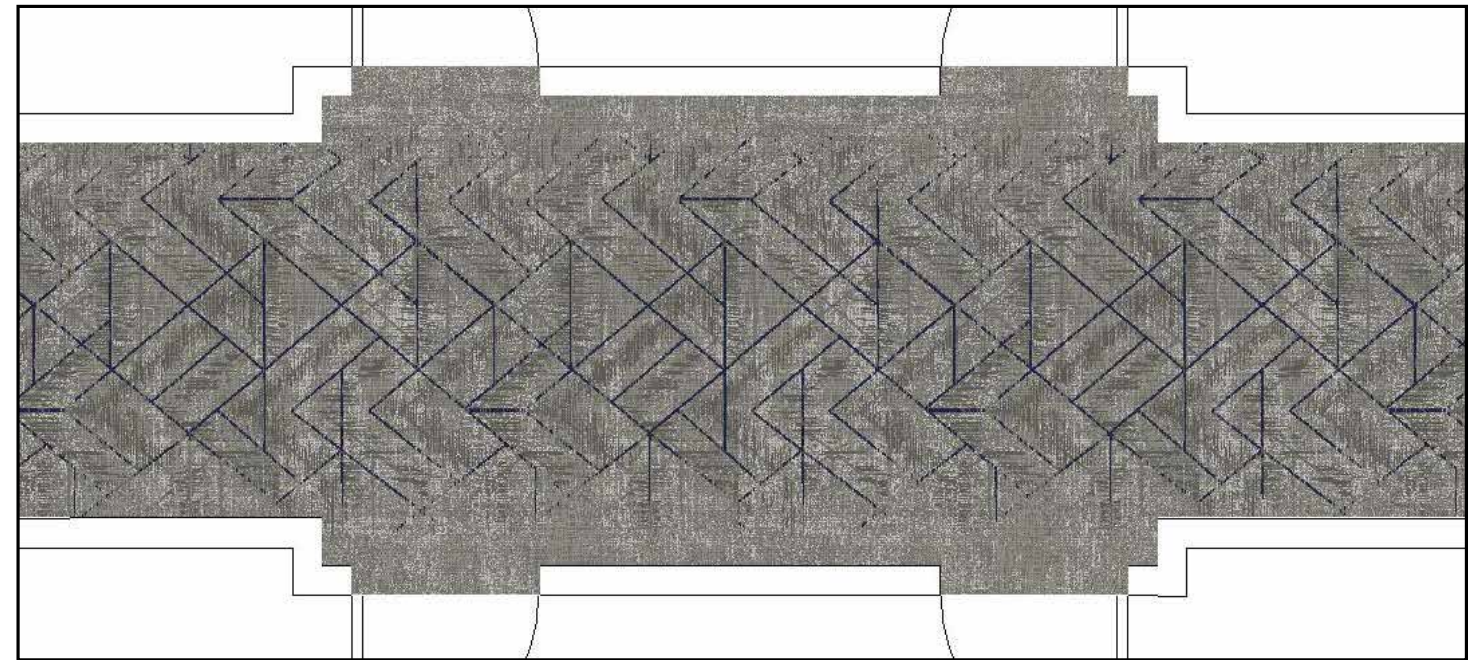
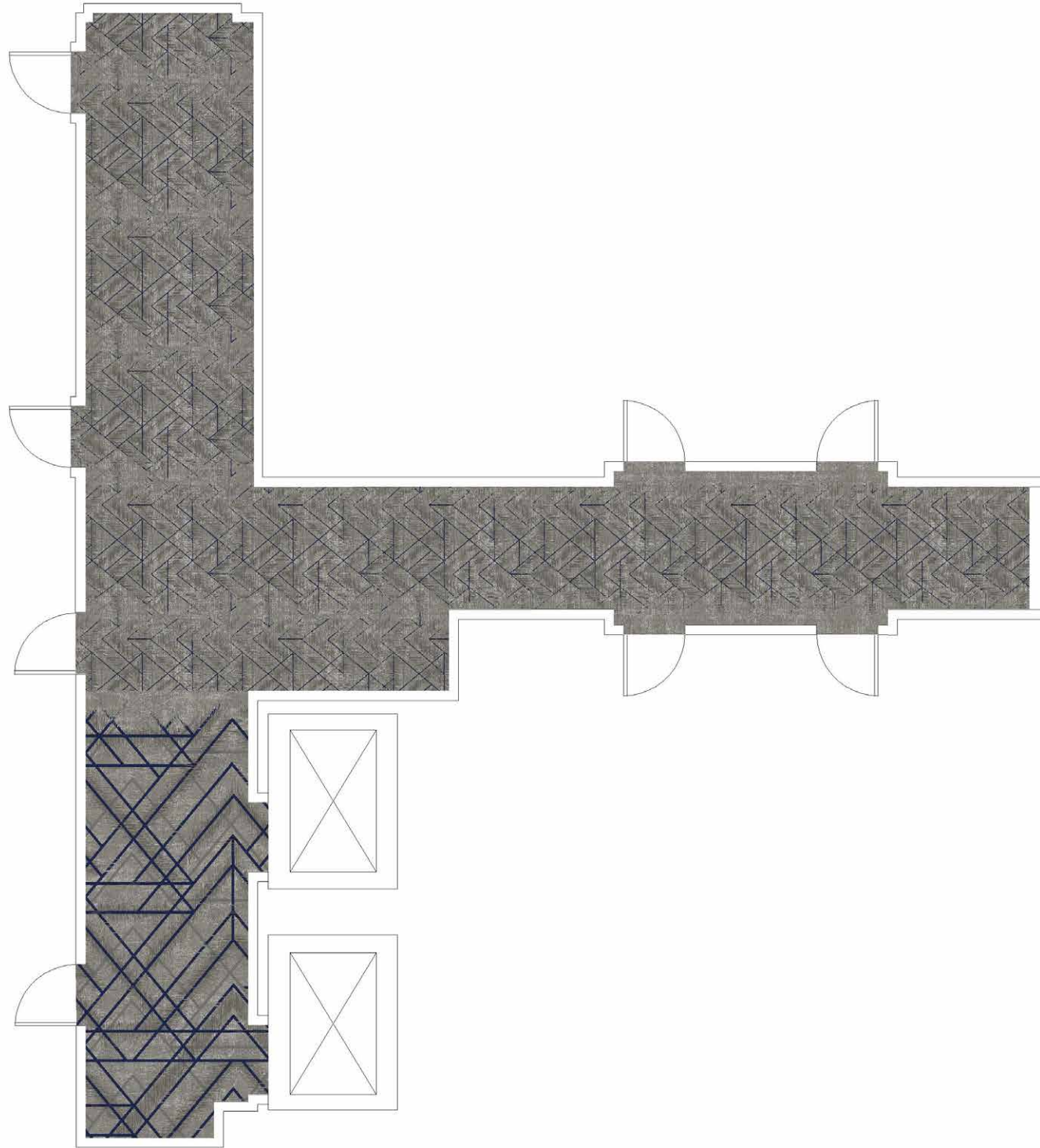
Repeat Size	157.14" x 276"
Quality	8 Row
Fiber	80% Premium Wool 20% Nylon
Loom Width	13'2"
ID#	326814



SHERATON:
TIMELESS COMFORT

LIGHT

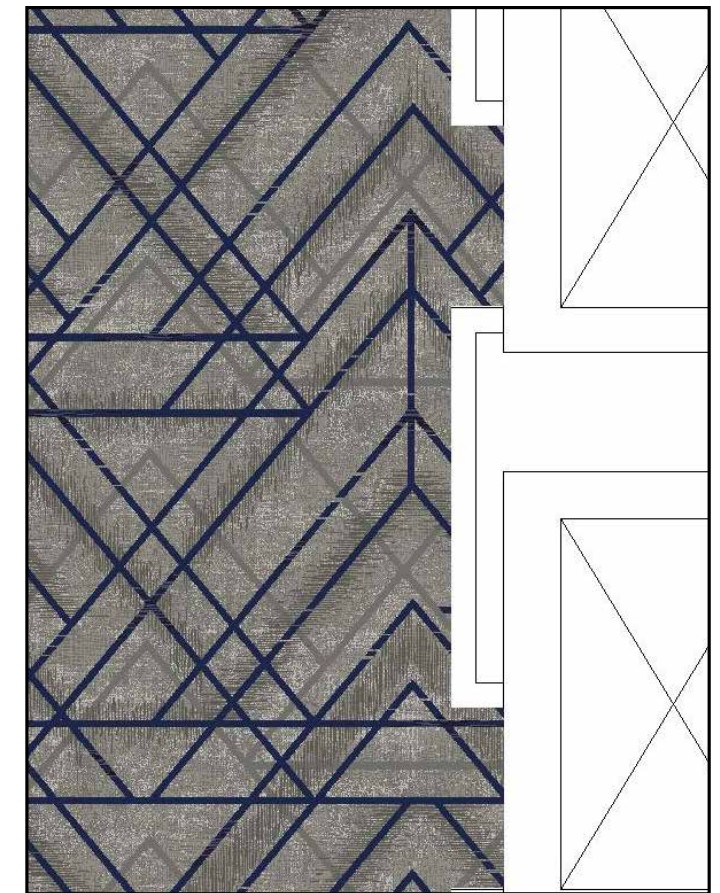
CORRIDOR RUNNER, OUTFILL,
TRANSITION AND ELEVATOR LOBBY



CLOSE-UP DETAIL



CLOSE-UP DETAIL



CLOSE-UP DETAIL

CORRIDOR OUTFILL DARK



14272V2A-8R 2PLY



CLOSE-UP DETAIL

SPECIFICATIONS

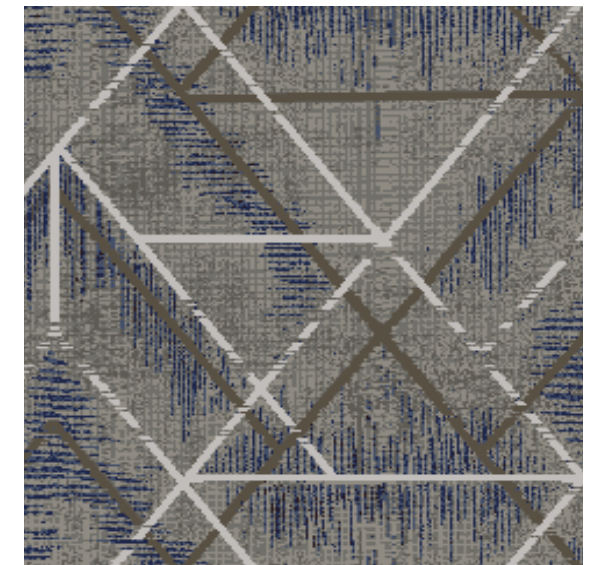
Repeat Size	78.57" x 88.50"
Quality	8 Row
Fiber	80% Premium Wool 20% Nylon
Loom Width	13'2"
ID#	326807



CORRIDOR RUNNER DARK



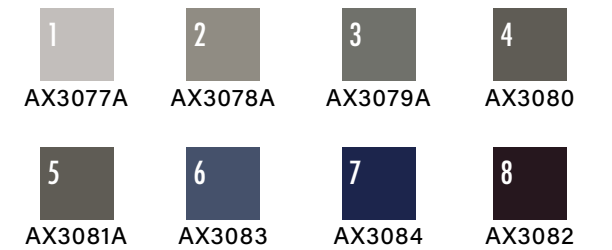
12374V2A-8R 2PLY



CLOSE-UP DETAIL

SPECIFICATIONS

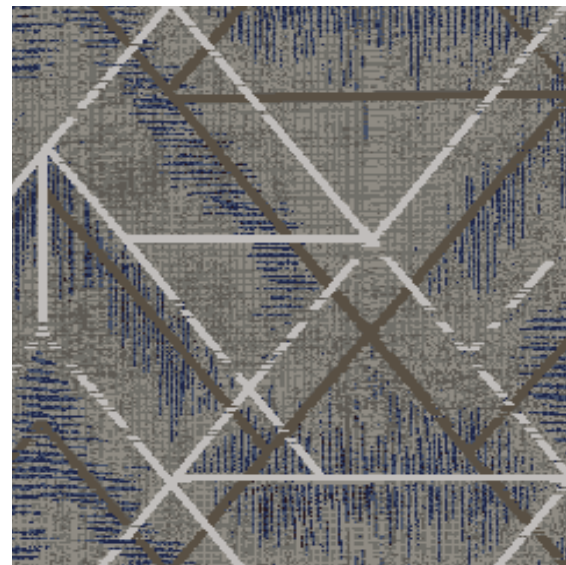
Repeat Size	78.57" x 88.50"
Quality	8 Row
Fiber	80% Premium Wool 20% Nylon
Loom Width	13'2"
ID#	326806



TRANSITION DARK



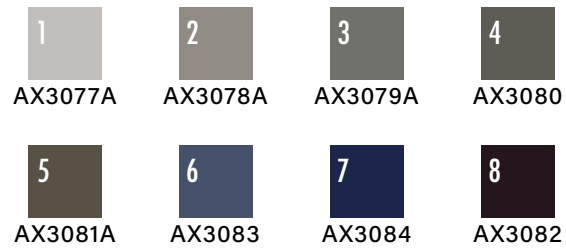
14273V2A-8R 2PLY



CLOSE-UP DETAIL

SPECIFICATIONS

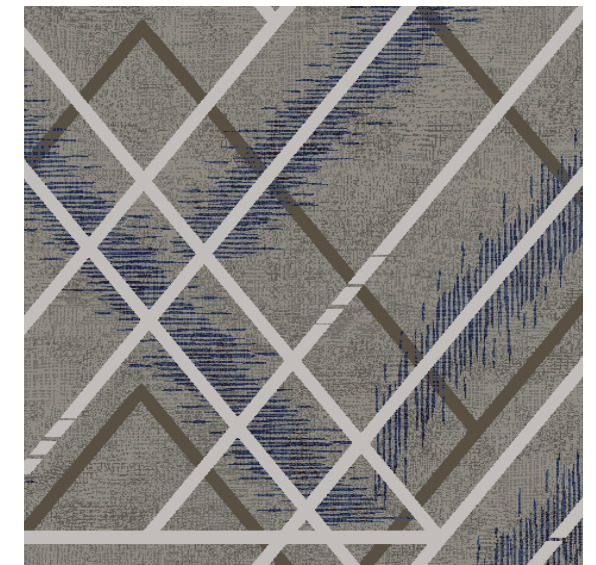
Repeat Size	78.57" x 88.50"
Quality	8 Row
Fiber	80% Premium Wool 20% Nylon
Loom Width	13'2"
ID#	326813



ELEVATOR LOBBY DARK



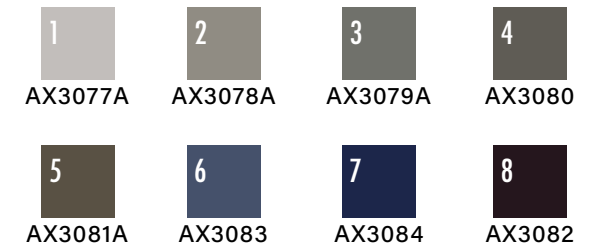
14308V2A-8R 2PLY



CLOSE-UP DETAIL

SPECIFICATIONS

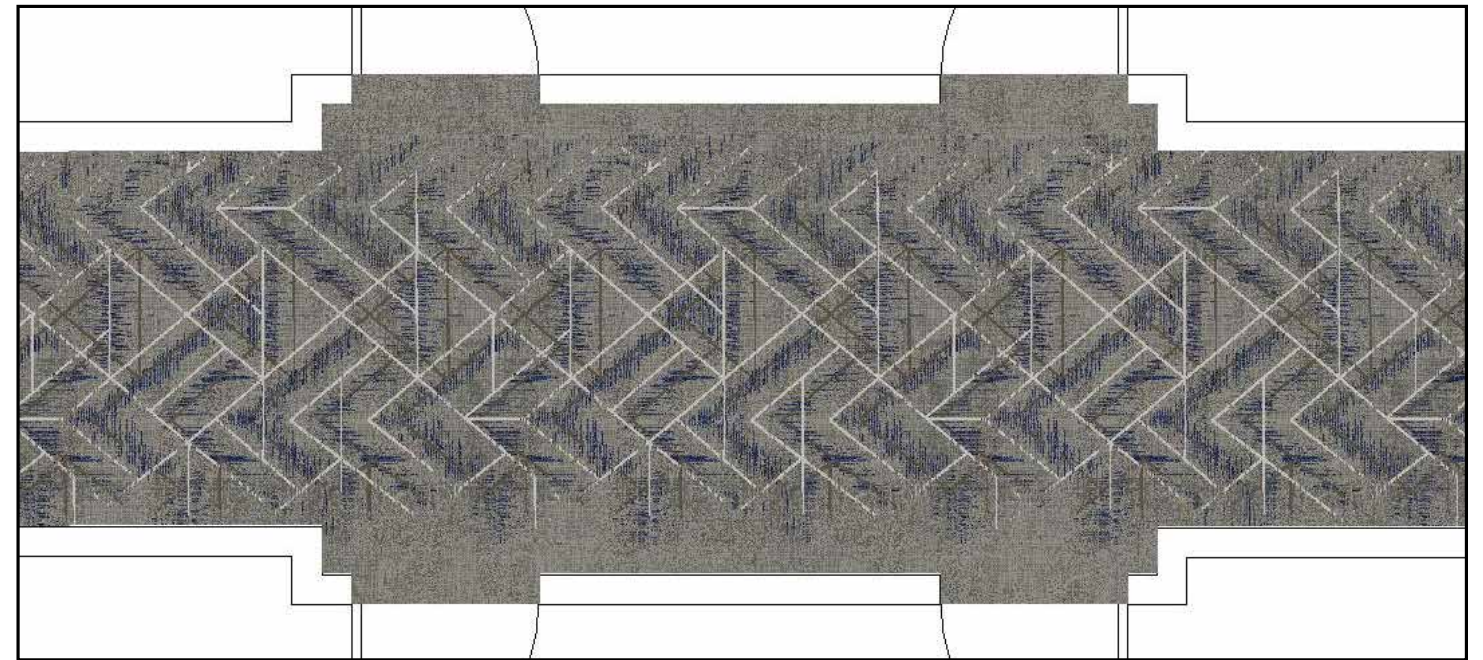
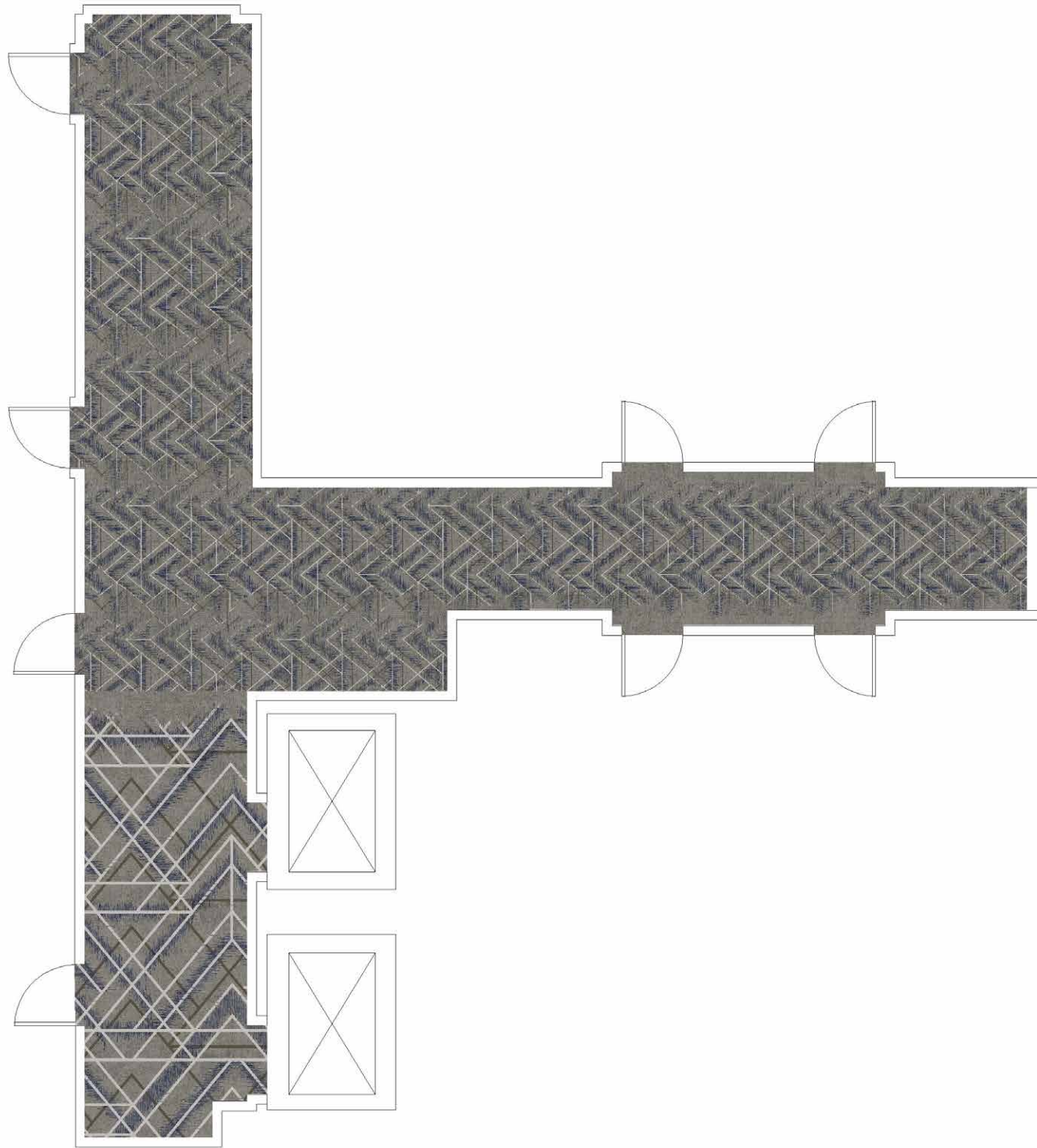
Repeat Size	157.14" x 276"
Quality	8 Row
Fiber	80% Premium Wool 20% Nylon
Loom Width	13'2"
ID#	326816



SHERATON:
TIMELESS COMFORT

DARK

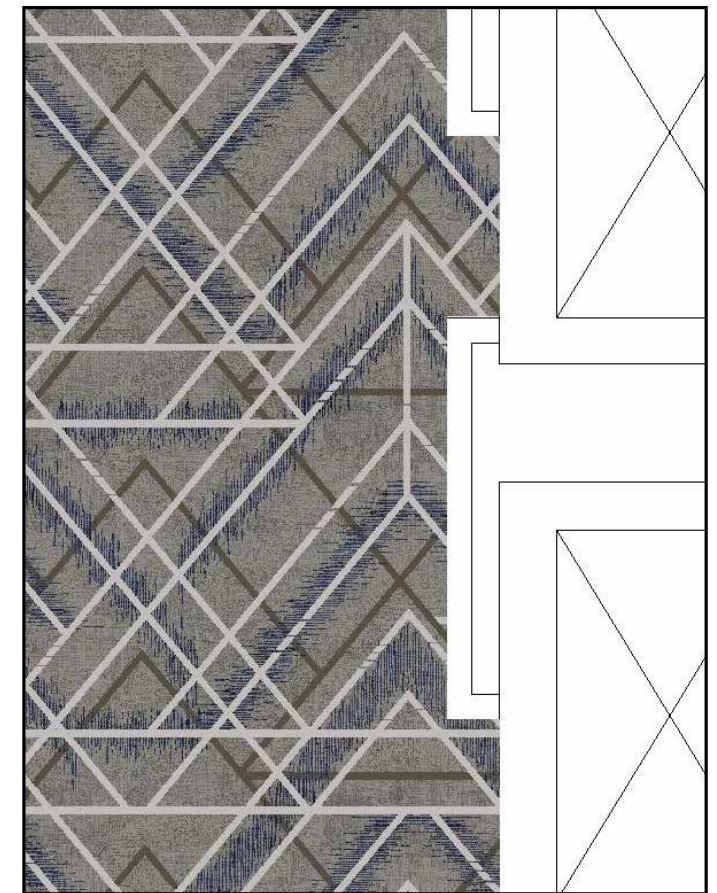
CORRIDOR RUNNER, OUTFILL,
TRANSITION AND ELEVATOR LOBBY



CLOSE-UP



CLOSE-UP

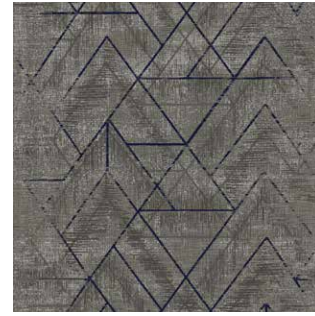


CLOSE-UP

SHERATON:
TIMELESS COMFORT | LIGHT



DESIGN #: 14272V1A
MARRIOTT ID: 326805



DESIGN #: 12373V2A
MARRIOTT ID: 326802



DESIGN #: 14273V1A
MARRIOTT ID: 326812



DESIGN #: 14308V1A
MARRIOTT ID: 326814

SHERATON:
TIMELESS COMFORT | DARK



DESIGN #: 14272V2A
MARRIOTT ID: 326807



DESIGN #: 12374V2A
MARRIOTT ID: 326806



DESIGN #: 12373V2A
MARRIOTT ID: 326813



DESIGN #: 14308V2A
MARRIOTT ID: 326816

AXMINSTER
SPECIFICATION

8 ROW-2 PLY | 80% WOOL/20% NYLON | Guestroom & Guestroom Corridors

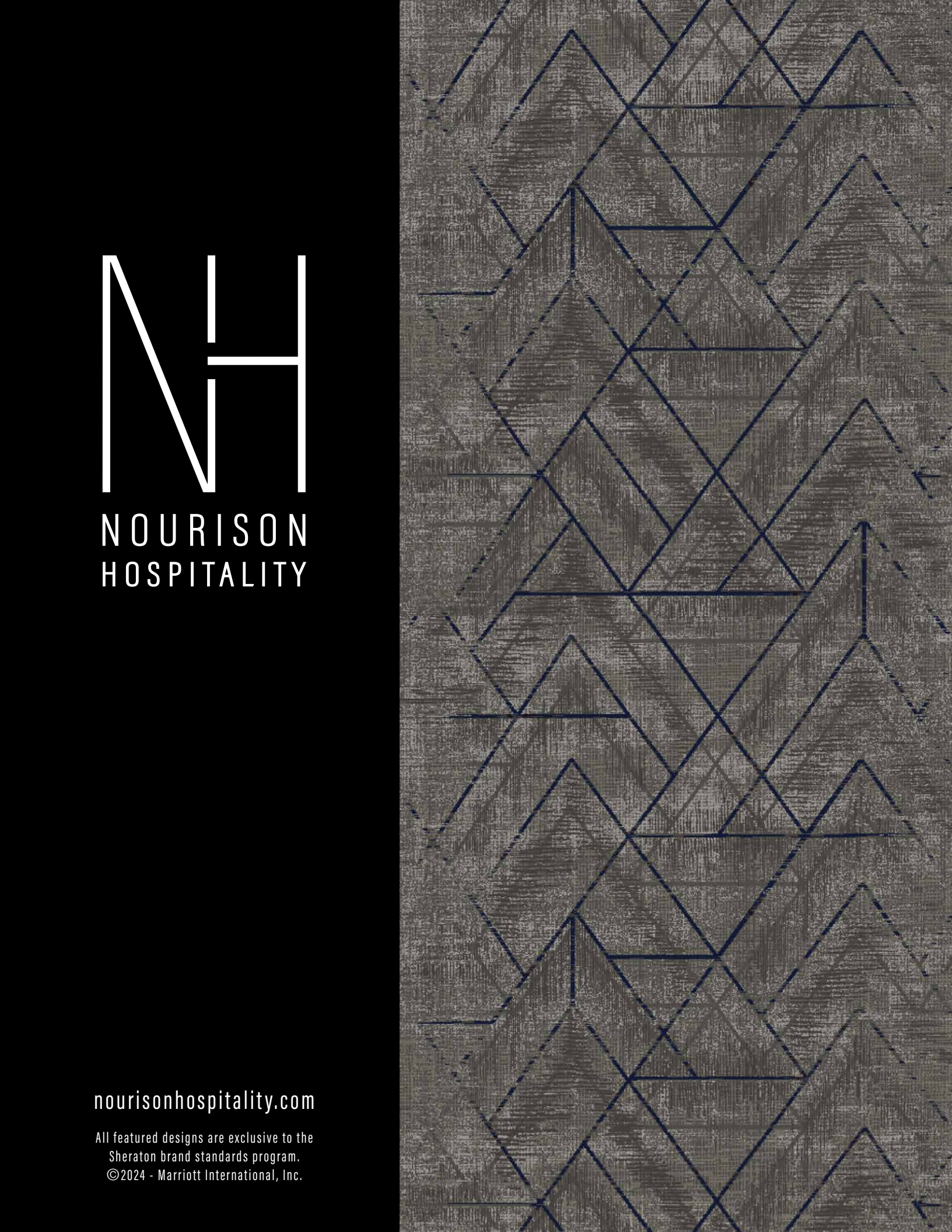
SPECIFICATIONS	
QUALITY	8 Row
CONSTRUCTION	Woven Axminster Cut Pile
APPEARANCE	Cut Pile
YARN/FIBER CONTENT	80% Premium Wool / 20% Nylon 6.6
DYE METHOD	Skein Dyed
WIDTH	13'2"
PILE WEIGHT	36 OZ/SY
TOTAL WEIGHT	58 OZ/SY
PILE HEIGHT	0.276" (7 mm)
TOTAL HEIGHT	0.354" (9 mm)
YARN COUNT	2-Ply (3s/2)
YARN TWIST	3.56 TPI (Twists per Inch) "S" Twist
PITCH	7 per inch
ROW	8 per inch
BACKING	Synthetic (Weft=100% Polypropylene / Warp=100% Polyester)
COUNTRY OF ORIGIN	China

FINISHING	
TECHNIQUES	Unique Abrash dye finish, Carving, Pencil Carving, Beveling, Embossing, Recessing, and Sculpting available upon request. An up charge may apply. 8 Row through 12 Row available.
EDGES (For Area Rugs):	Machine Serged (Scallop Hand Serged, Hand Serged)

PERFORMANCE	
FLAMMABILITY	PILL TEST CPSC FF-1-70, 16CFR-1630.4, ASTM D2859-96 FLOORING RADIANT PANEL CLASS 1 ASTM E-648 SMOKE GENERATION ASTM E-662 Less than 450

WHERE USED	
	Guestrooms and Suites Corridors

BENEFITS	
	Up to 16 colors. NH's signature Abrash dyeing technique unique to the industry is available. Made for heavy traffic areas. Superior long-term appearance retention and recovery from compression characteristics, along with sound absorption. 3-Ply yarn system is NH's standard and is also available upon request.



NH

NOURISON
HOSPITALITY

nourisonhospitality.com

All featured designs are exclusive to the
Sheraton brand standards program.

©2024 - Marriott International, Inc.