



MINA VICTORY
H A N D B A G S

Mina Victory Handbags



From evening elegance to boho chic, Mina Victory strikes the perfect tone. Mina Victory keeps you on trend with classic clutches and cross-body bags, finished with hand stitching and beading for the perfect blend of fine craftsmanship and spectacular style.

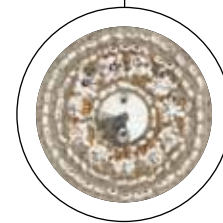
Gemstone Clutches



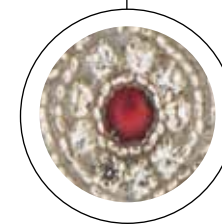
Designed to dazzle, these luxurious snap-closure bags are encrusted with hand beaded seed beads and crystal rhinestones for the ultimate accessory to your evening. Included removable cross body chain.



HR010 EMERALD
Seed Beads &
Crystal Rhinestones
8 in. x 5 in. x 3 in.



HR010 DIAMOND
Seed Beads &
Crystal Rhinestones
8 in. x 5 in. x 3 in.

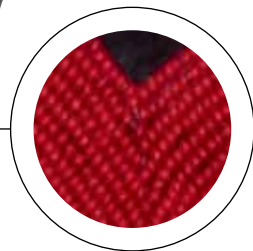


HR010 GARNET
Seed Beads &
Crystal Rhinestones
8 in. x 5 in. x 3 in.

Pop Art

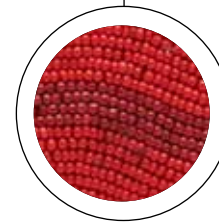


Make your style pop with these zip-closure handbags featuring lively graphics and slim urban style. Luxury touches include hand beaded seed beads, hair-on-hide, and woven leather.



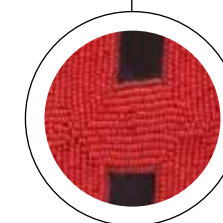
PD134 BLACK

Seed Beads
on Cow Hide
12 in. x 11 in. x 2 in.



PD130 BLACK

Seed Beads
on Cow Hide
12 in. x 11 in. x 2 in.



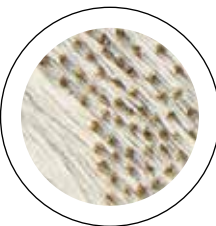
PD131 BLACK

Seed Beads
on Cow Hide
12 in. x 11 in. x 2 in.

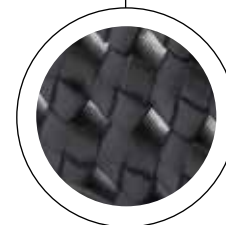
Tablet Bags



These tablet bags work overtime to make toting your technology as chic as can be, in elegant woven leather or laser cut hair-on hide; fits most iPads and tablets.



PD096 LIGHT GREY
Laser Cut Hair on Hide
11 in. x 9 in. x 2 in.

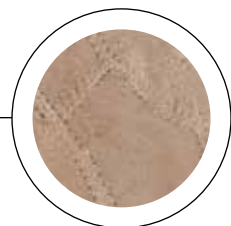


PD132 BLACK SILVER
Hand Braided Basket Weave Leather
12 in. x 11 in. x 2 in.

Patch Weekenders

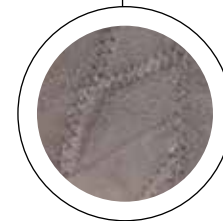


Softly sueded goatskin artfully composed in a patchwork pattern makes an irresistible weekender bag; just the right size for your stylish getaway.



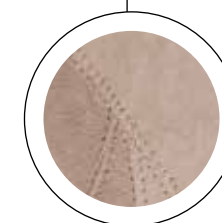
IV108 BEIGE

Goat Skin Leather
19 in. x 6 in. x 14 in.



IV108 CHARCOAL

Goat Skin Leather
19 in. x 6 in. x 14 in.



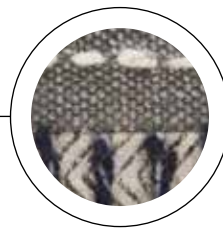
IV108 LIGHT GREY

Goat Skin Leather
19 in. x 6 in. x 14 in.

Boho Chic



Go totally textured with this collection of stonewash cotton handbags with vegan "leather" accents. Fringes, pom-poms, topstitching, and vegan leather trim put the finishing touches on lively patchwork styles.



AM112 MULTI

Stonewash & Printed Cotton
17 in. x 5 in. x 12 in.



AM005 MULTI

Stonewash & Printed Cotton
15 in. x 5 in. x 10 in.

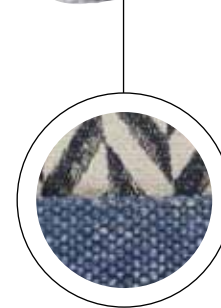


AM010 MULTI

Stonewash & Printed Cotton
22 in. x 7 in. 13 in.



AM017 MULTI
Hand Stitched Cotton
12 in. x 12 in.



AM013 MULTI
Stonewash & Printed Cotton
16 in. x 5 in. x 12 in.



MINAVICTORY
H A N D B A G S

Nourison Industries, Inc., US Headquarters

5 Sampson St., Saddle Brook, NJ 07663 | (800) 223-1110 | Fax (201) 368-0739

New York Showroom

295 Fifth Ave. Suite 114, New York, NY 10016 | (212) 545-1030

Atlanta Showroom

Atlanta Merchandise Mart | 240 Peachtree St. N.W., Space 1L1, 2, Atlanta, GA 30303 | (404) 584-7255

Las Vegas Showroom

World Market Center, Building C | 455 S. Grand Central Pkwy., Suite C112, Las Vegas, NV 89106 | (702) 454-2600

Highpoint Showroom

International Home Furnishings Center (IHFC) | 210 E. Commerce Ave., InterHall IH101 High Point, NC 27260 | (336) 841-6900

Nourison Europe

Freilagerstrasse 39, 8047 Zurich, Switzerland | (+41) 044 401 45 46/47 | Fax (+41) 044 401 45 48

Photos and images in this catalog are for reference only; actual colors and textures may vary.
Rugs shown are of specific size; design details may vary with size changes.

NOURISON.COM/MINAVICTORY

©Nourison 2018 • 0718